



GAT MONTHLY MEMBERSHIP PROGRESS REPORT

Results as of: 1/31/2023

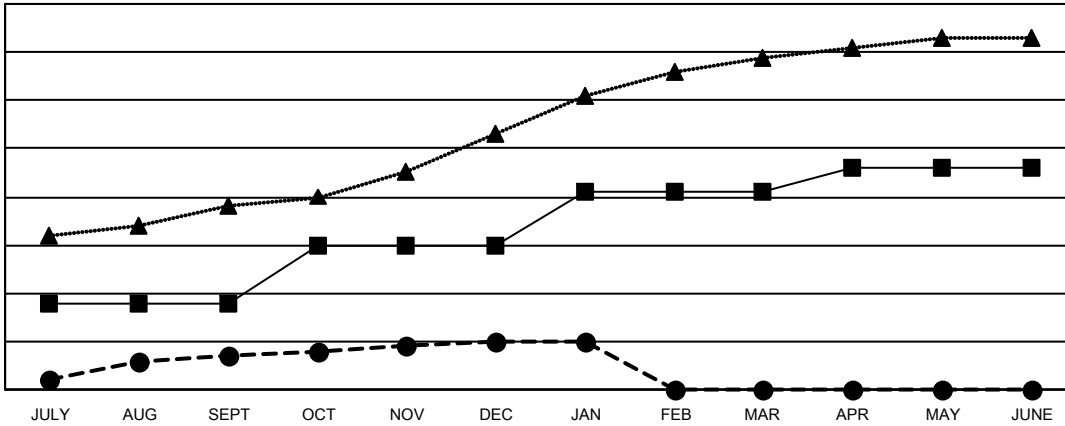
Multiple District 3232

LOCATION: INDIA

Clubs			
RESULTS FOR 2022-2023			
QUARTER	NEW CLUB GOAL	NEW CLUBS	DROPPED CLUBS
JULY/AUG/SEPT	18	7	102
OCT/NOV/DEC	12	3	15
JAN/FEB/MAR	11	0	2
APR/MAY/JUNE	5	0	0

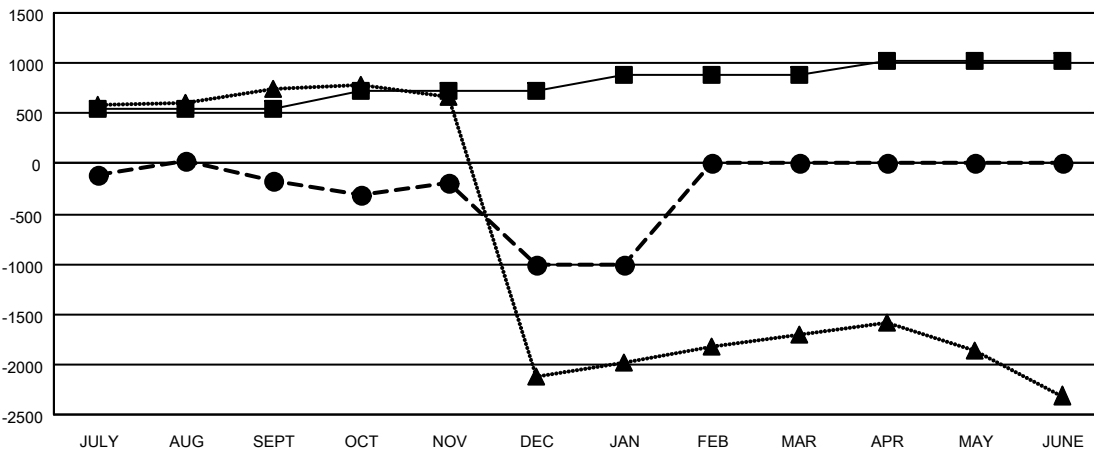
Members			
RESULTS FOR 2022-2023			
QUARTER	MEMBER GROWTH NET GOAL	MEMBER GROWTH ACTUAL	DROPPED MEMBERS ACTUAL (including transfers)
JULY/AUG/SEPT	545	558	658
OCT/NOV/DEC	175	796	1,573
JAN/FEB/MAR	170	71	52
APR/MAY/JUNE	125	0	0

GOALS AND ACTUAL NEW CLUBS CUMULATIVE



- CURRENT YEAR GOALS FOR NEW CLUBS
- CURRENT YEAR ACTUAL NEW CLUBS
- ▲- LAST YEAR ACTUAL NEW CLUBS

GOALS AND ACTUAL MEMBERS CUMULATIVE



- MEMBER GROWTH NET GOAL
- MEMBER GROWTH ACTUAL
- ▲- LAST YEAR MEMBERSHIP ACTUAL

DROPPED CLUBS: 119	195 CLUBS OF 610 ADDED 1 OR MORE NEW MEMBERS	GENDER DISTRIBUTION
DROPPED MEMBERS	CLICK HERE FOR CUMULATIVE MEMBERSHIP DATA	MALE 10,607 (63.26%)
DECEASED 23		FEMALE 6,155 (36.71%)
CLUB CANCELLED 318		NON BINARY 0 (0.00%)
OTHER 1,942		PREFER NOT TO ANSWER 4 (0.02%)
TOTAL 2,283		TOTAL FAMILY UNIT MEMBERS 12,498
		FAMILY MEMBERS PAYING HALF DUES 8,588